

Nolan Computers' INTEGRATION BRIDGE for MICROSOFT® CRM

A Robust Front and Back Office Integration

The Integration Framework allows key data to be passed between Microsoft-CRM and Microsoft Great Plains without the need of additional hardware. The framework also supports integrations between multiple Microsoft-CRM business units and multiple Microsoft Great Plains companies.

Available data transfers between Microsoft CRM and Microsoft Great Plains include:

- Account/Customer data
- Product/Item data
- Quote/Order/Invoice/Return transactions
- Case/Service call transactions

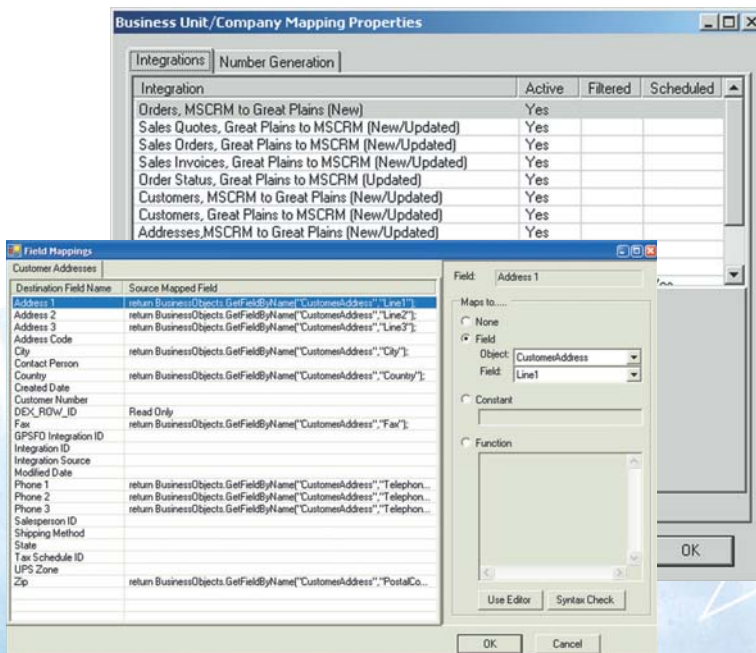
Nolan Computers'
Integration Bridge for Microsoft CRM
provides an efficient, customizable
integration between Microsoft CRM
and **Microsoft Great Plains.**

BENEFITS :

- Integrates Customer Data, Sales Orders, Sales Returns, Product Data, Multi-company and a whole lot more.
- Exceptional Integration log and error log
- Designed for easy maintenance at customer site
- Turnkey solution
- Utilizes proven technology
- Easy and logical mapping process
- The MS-CRM Integration Framework does not require its own separate server.
- Great Plains version 8.0 compatible
- Real-time Integration between MS-CRM and Great Plains

FEATURES:

- Integrates with Great Plains' Field Service
- Integrates customer accounts and addresses with CRM sales Standard
- Work with Small Business Manager!
- Two-way integration of customer accounts and addresses
- Immediate transfer of price lists and item changes from Microsoft Great Plains to MS-CRM
- Automatic transfer of orders
- Utilizes proven technology for simple installation and management



 **NOLAN**
COMPUTERS
INTEGRATING EXCELLENCE